

LUNE™

INTRODUCING A NEW PARADIGM IN MODULAR SOFAS



REPUBLIC OF **Fritz Hansen**®

“SOFAS TEND TO BE PRESENTED FROM THE FRONT - WITH LUNE™ I WANT TO HIGHLIGHT THE BEAUTY OF THE PROFILE IN THE WAY THE BACKREST AND THE SEAT ARE HARMONISED.”

Jaime Hayon, designer



Lune™ is the very essence of a warm and cosy setting, with a dash of exclusivity and urbanity to it. Lune combines the renowned Republic of Fritz Hansen quality with a functional modular system. The result is a playful design where designer Jaime Hayon's curvy characteristics are elevated to an extremely comfortable and beautifully looking sofa, from every angle - for a party of two as well as for ten.



DESIGN



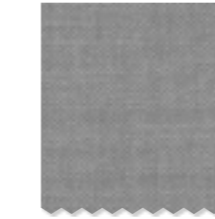
CAN BE CUSTOMISED TO MEET ANY NEED

The fabric chosen for the Designer Selections is made in cotton to create a comfortable seating of an exceptionally soft texture.

UPHOLSTERY



Grey Mist



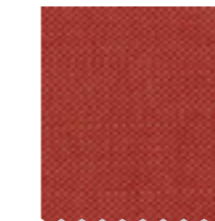
Eucalyptus



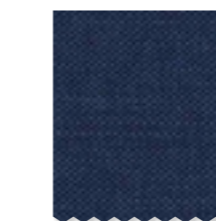
Lead



Blueberry



Gingersnap

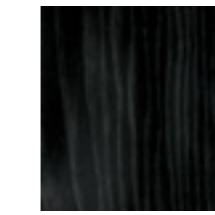


Indigo

LEGS



Oak



Black coloured oak

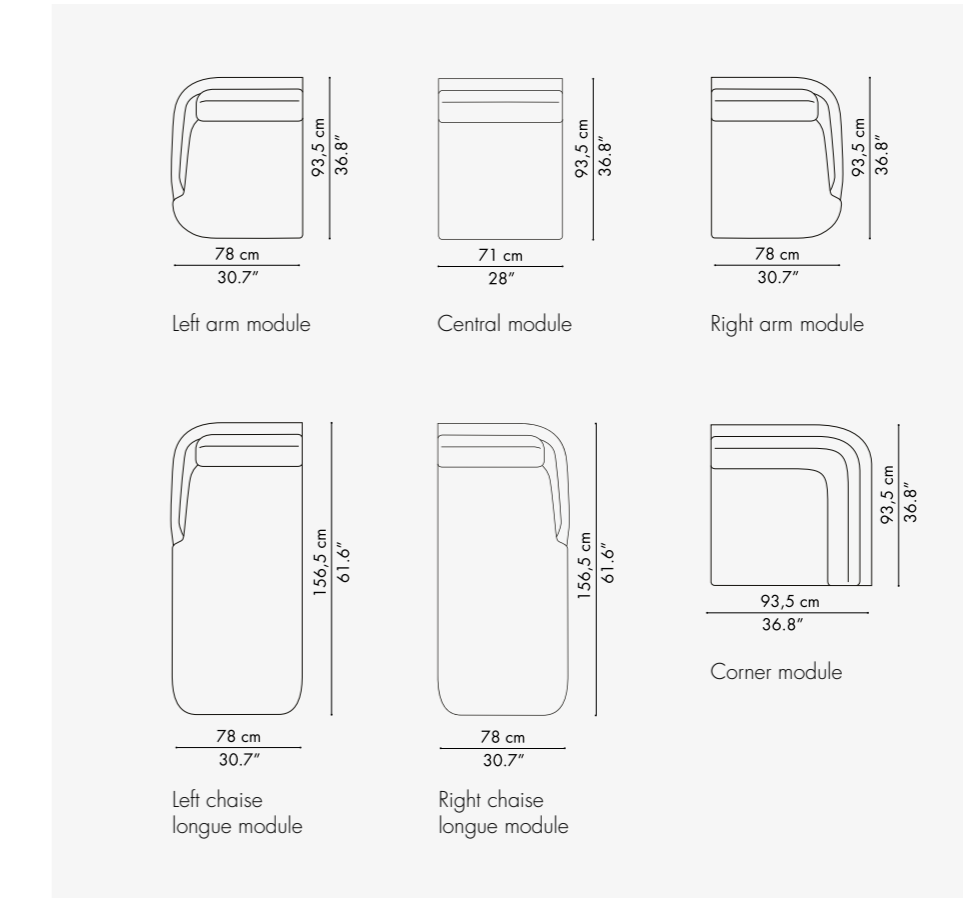


Brushed aluminium

COLOURS & LEGS

COMBINE LUNE™ THE WAY YOU WANT

Lune™ is a modular sofa created to be combined in unlimited ways of shaping it - from a straight 2-seater to bigger L-shapes and chaise longue options.



MODULES



WWW.FRITZHANSEN.COM

LUNE™

INTRODUCING A NEW
PARADIGM IN MODULAR SOFAS

